

Technical Data Sheet	S350-S	Oil and water service
----------------------	---------------	-----------------------



S350-S

Single acting, single air drive head, side inlet

Technical Data:

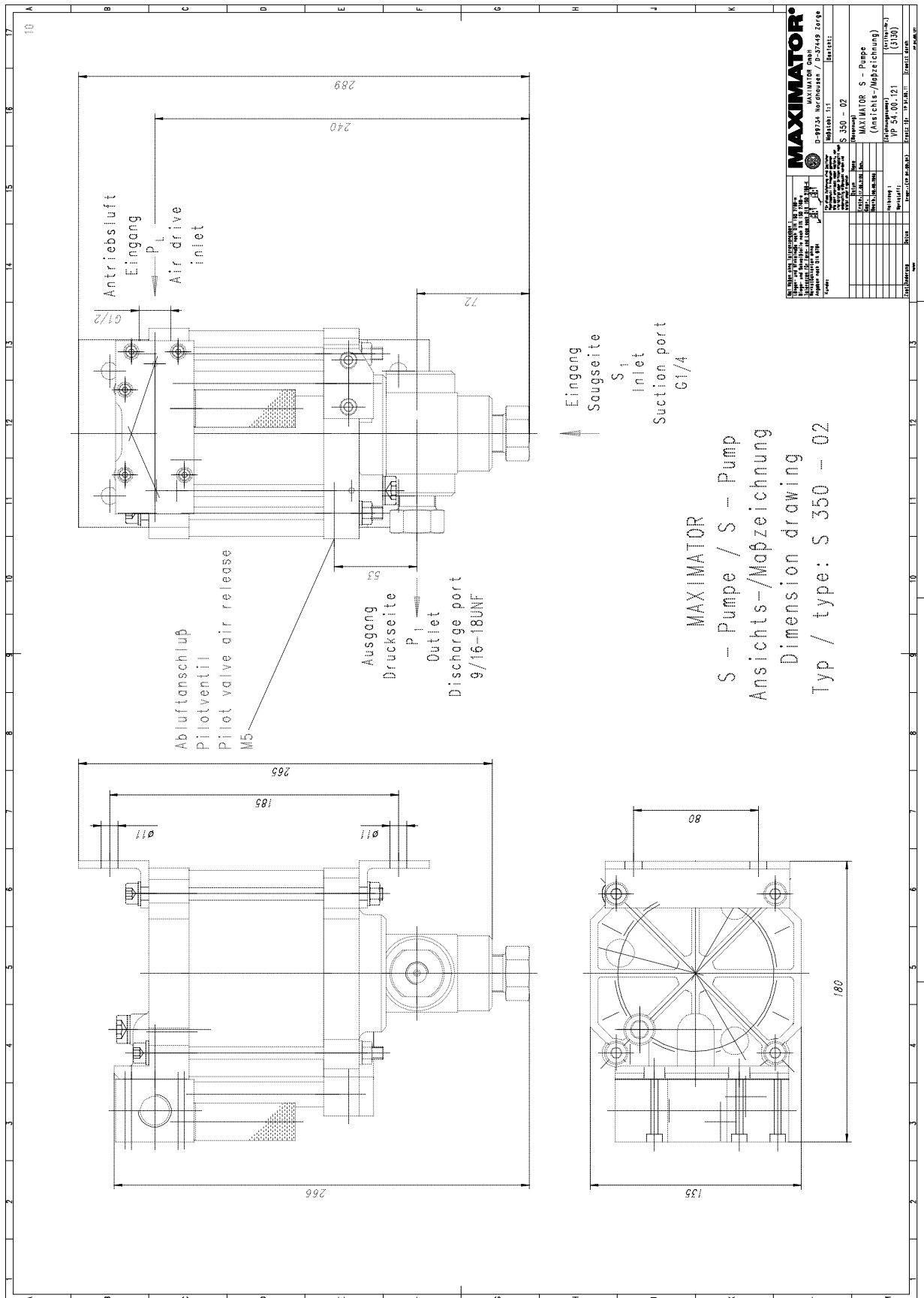
Air drive pressure:	1-10 bar / 14,5—145 psi
Maximum permitted outlet Pressure:	3,000 bar/ 43,500 psi static; 1,800 bar/ 26,100 psi dynamic
Pressure ratio:	1:350
Calculated displacement volume/ double stroke:	1.3 cm ³
Connections	
Inlet:	1/4 BSP Standard: side inlet
Outlet:	9/16-18UNF
Air drive:	1/2 BSP
Maximum operating temperature:	60°C
Net weight:	7 kg

Pressure and flow performances, please see enclosed graph.

Materials of construction:	Top cap:	Aluminium
	Air cylinder:	Aluminium hard coat
	seal package:	Polyurethane, Buna N
	Pump Body:	Stainless steel 1.4313
	HP Piston:	Stainless steel 1.4112
Approximate Dimensions:	Height:	289 mm
	Depth:	140 mm
	Width:	175 mm
Available Options:	Bottom inlet	S350
	Special inlet and outlet ports, i.e. NPT	S350-NPT
	Special seal material to handle special fluids on request.	
Available Accessories:		
Air control units for S series with filter pressure regulator, control pressure gauge and shut off valve:	S350-S with C1.5	
To protect the pump against excessive outlet pressures or to limit the outlet pressure, a safety valve can be fitted to the air control unit in the air drive line:	S350-S with C1.5/SVair (The required outlet pressure has to be indicated.)	

Please consult factory for more information.

All technical and dimensional information subject to change. All General Terms and Conditions of sale, including limitations of our liability, apply to all products and services sold.



MAXIMATOR D-37449 Zorge MAXIMATOR GmbH Industriestraße 15 37449 Zorge		Typ / type: S 350 - 02 Zeichnung / drawing: VP 54.00.121 Blatt / sheet: 1/1
Hersteller / manufacturer: MAXIMATOR GmbH Auftrag / order: VP 54.00.121 Zeichnung / drawing: VP 54.00.121 Blatt / sheet: 1/1	Material / material: S 350 - 02 Ausführung / execution: (Antriebs-/Nadelpumpen) Ausführung / execution: VP 54.00.121 Ausführung / execution: (3130)	Datum / date: 15.01.2005 Gezeichnet / drawn: [Signature] Geprüft / checked: [Signature] Freigegeben / released: [Signature]

