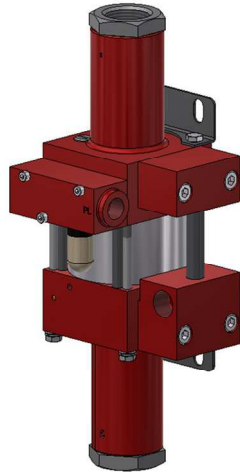
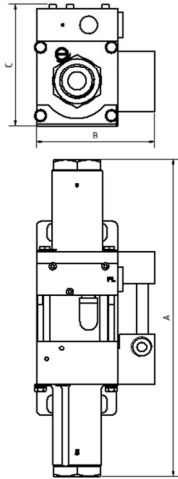




Technical Data Sheet

M4D » Oil service

M4DVE » Water service



M4D
double acting, single air drive head
(Standard= Side inlet)

Technical Data:

Air drive pressure: 1 - 10 bar / 14.5 - 145 psi

Calculated working pressure: 40 bar / 580 psi

Pressure ratio: 1:4

Displacement volume/double stroke: 61 cm³ / 3.7 cu.inch

Connections:

Inlet: Standard: Bottom Inlet 1" BSP

Outlet: 1/2" BSP

Air drive: 3/8" BSP

Maximum operating temperature: 60°C

Net weight: 4.7 kg

Pressure and flow performances, please see enclosed graph.

Wetted materials of construction:

Seal package: M4D: Polyurethane, NBR
M4DVE: UHMWPE, FKM

Pump Body: 3.1645

Piston: 1.4112

Fittings Inlet: 1.4305
Outlet: 3.1645

Approximate Dimensions:

A: 314 mm

B: 117 mm

C: 120 mm

Available Options:

Seal material for oil service: M4D

Seal material for water service: M4DVE

Liquid inlet: Standard: bottom inlet, side inlet
not available

Special inlet and outlet ports, i.e. NPT: M4D-NPT
M4DVE-NPT

Special seal material to handle special fluids on request.

Available Accessories:

Air control units for M series with filter pressure regulator, control pressure gauge and shut off valve: M4D with C1

To protect the pump against excessive outlet pressures or to limit the outlet pressure, a safety valve M4D with C1/SV-air (The required outlet pressure has to be indicated.) can be fitted to the air control unit in the air drive line.

Please consult factory for more information. All technical and dimensional information subject to change. All General Terms and Conditions of sale, including limitations of our liability, apply to all products and services sold.



Leistungsdiagramm/Performance Graph M 4 D

Prüfflüssigkeit/Test Liquid: Wasser-Öl-Emulsion/Water Oil Emulsion ca. 1 - 10 cst

