

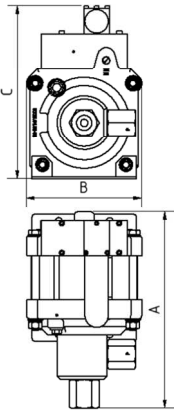
Technical Data Sheet

G25 (L)

» Oil service

G25 (L) VE

» Water service



G25 (L)
single acting, single air drive head
(Standard= Bottom inlet)

Technical Data:

Air drive pressure: 1 - 10 bar / 14.5 - 145 psi

Calculated working pressure: 280 bar / 4060 psi

Pressure ratio: 1:28

Displacement volume/double stroke: 35.3 cm³ / 2.15 cu.inch

Connections:

Inlet: Standard: Bottom Inlet 3/4" BSP

Outlet: 3/4" BSP

Air drive: 3/4" BSP

Maximum operating temperature: 60°C

Net weight: 14.5 kg

Pressure and flow performances, please see enclosed graph.

Wetted materials of construction:

Seal package: G25(L): Polyurethane, NBR
G25(L)VE: UHMWPE, FKM

Pump Body: 1.4404

Piston: 1.4542

Fittings: G25(L): 1.4305
G25(L)VE: 1.4404

Approximate Dimensions:

A: 309.5 mm

B: 181 mm

C: 272 mm

Available Options:

Seal material for oil service: G25 (L)

Seal material for water service: G25(L)VE

Side inlet: G25(L)S/ G25(L)VES

Special inlet and outlet ports, i.e. NPT: G25(L)-NPT
G25(L)VE-NPT

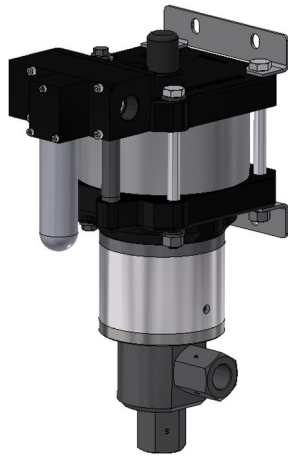
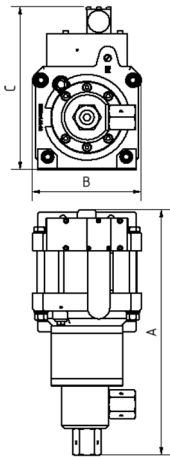
Special seal material to handle special fluids on request.

Available Accessories:

Air control units with filter pressure regulator, control pressure gauge and shut off valve: G25(L) with C2

To protect the pump against excessive outlet pressures or to limit the outlet pressure, a safety valve G25(L) with C2/SV-air (The required outlet pressure has to be indicated.) can be fitted to the air control unit in the air drive line.

Please consult factory for more information. All technical and dimensional information subject to change. All General Terms and Conditions of sale, including limitations of our liability, apply to all products and services sold.



GSF25 (L)

single acting, single air drive head
with distance piece (Standard = Bottom inlet)

Technical Data:

Air drive pressure:	1 - 10 bar / 14.5 - 145 psi
Calculated working pressure:	280 bar / 4060 psi
Pressure ratio:	1:28
Displacement volume/double stroke:	35.3 cm ³ / 2.15 cu.inch

Connections:

Inlet:	Standard: Bottom Inlet 3/4" BSP
Outlet:	3/4" BSP
Air drive:	3/4" BSP
Maximum operating temperature:	60°C
Net weight:	19.0 kg

Pressure and flow performances, please see enclosed graph.

Wetted materials of construction:

Seal package:	GSF25(L): PTFE GSF25(L)VE: UHMWPE, FKM
Pump Body:	1.4404
Piston:	1.4542
Fittings:	1.4404

Approximate Dimensions:

A:	409.5 mm
B:	181 mm
C:	272 mm

Available Options:

Side inlet:	GSF25(L)S
Special inlet and outlet ports, i.e. NPT:	GSF25(L)-NPT
Special seal material to handle special fluids on request.	

Available Accessories:

Air control units with filter pressure regulator, control pressure gauge and shut off valve:	GSF25(L) with C2
To protect the pump against excessive outlet pressures or to limit the outlet pressure, a safety valve can be fitted to the air control unit in the air drive line.	GSF25(L) with C2/SV-air (The required outlet pressure has to be indicated.)

Please consult factory for more information. All technical and dimensional information subject to change. All General Terms and Conditions of sale, including limitations of our liability, apply to all products and services sold.



Leistungsdiagramm/Performance Graph G(SF) 25

Prüfflüssigkeit/Test Liquid: Wasser-Öl-Emulsion/Water Oil Emulsion ca. 1 - 10 cst

