

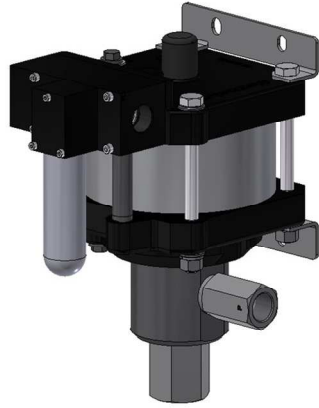
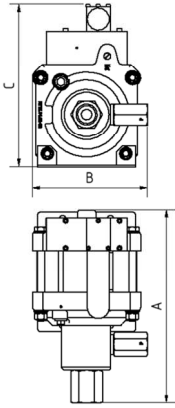
## Technical Data Sheet

G10 (L)

» Oil service

G10 (L) VE

» Water service



G10 (L)  
single acting, single air drive head  
(Standard= Bottom inlet)

### Technical Data:

Air drive pressure:	1 - 10 bar / 14.5 - 145 psi
Calculated working pressure	110 bar / 1595 psi
Pressure ratio:	1:11
Displacement volume/double stroke:	90.0 cm <sup>3</sup> / 5.49 cu.inch

### Connections:

Inlet:	Standard: Bottom Inlet 1" BSP
Outlet:	3/4" BSP
Air drive:	3/4" BSP
Maximum operating temperature:	60°C
Net weight:	16.0 kg

Pressure and flow performances, please see enclosed graph.

### Wetted materials of construction:

Seal package:	G10(L): Polyurethane, NBR G10(L)VE: UHMWPE, FKM
Pump Body:	1.4404
Piston:	1.4542
Fittings:	G10(L): 1.4305 G10(L)VE: 1.4404

### Approximate Dimensions:

A:	324.5 mm
B:	192.5 mm
C:	272 mm

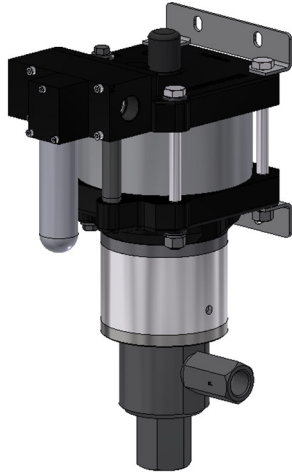
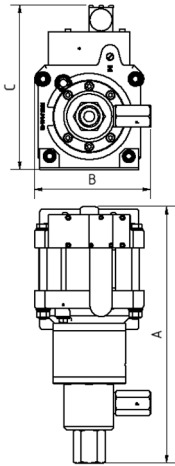
### Available Options:

Seal material for oil service:	G10 (L)
Seal material for water service:	G10(L)VE
Side inlet:	G10(L)S/ G10(L)VES
Special inlet and outlet ports, i.e. NPT:	G10(L)-NPT G10(L)VE-NPT
Special seal material to handle special fluids on request.	

### Available Accessories:

Air control units with filter pressure regulator, control pressure gauge and shut off valve:	G10(L) with C2
To protect the pump against excessive outlet pressures or to limit the outlet pressure, a safety valve can be fitted to the air control unit in the air drive line.	G10(L) with C2/SV-air (The required outlet pressure has to be indicated.)

Please consult factory for more information. All technical and dimensional information subject to change. All General Terms and Conditions of sale, including limitations of our liability, apply to all products and services sold.



GSF10 (L)  
single acting, single air drive head  
with distance piece(Standard = Bottom inlet)

#### Technical Data:

Air drive pressure:	1 - 10 bar / 14.5 - 145 psi
Calculated working pressure:	110 bar / 1595 psi
Pressure ratio:	1:11
Displacement volume/double stroke:	90.0 cm <sup>3</sup> / 5.49 cu.inch

#### Connections:

Inlet:	Standard: Bottom Inlet 1" BSP
Outlet:	3/4" BSP
Air drive:	3/4" BSP
Maximum operating temperature:	60°C
Net weight:	20.0 kg

Pressure and flow performances, please see enclosed graph.

#### Wetted materials of construction:

Seal package:	GSF10(L): PTFE GSF10(L)VE: UHMWPE, FKM
Pump Body:	1.4404
Piston:	1.4542
Fittings:	1.4404

#### Approximate Dimensions:

A:	424.5 mm
B:	192.5 mm
C:	272 mm

#### Available Options:

Side inlet:	GSF10(L)S
Special inlet and outlet ports, i.e. NPT:	GSF10(L)-NPT
Special seal material to handle special fluids on request.	

#### Available Accessories:

Air control units with filter pressure regulator, control pressure gauge and shut off valve:	GSF10(L) with C2
To protect the pump against excessive outlet pressures or to limit the outlet pressure, a safety valve can be fitted to the air control unit in the air drive line.	GSF10(L) with C2/SV-air (The required outlet pressure has to be indicated.)

**Please consult factory for more information.** All technical and dimensional information subject to change. All General Terms and Conditions of sale, including limitations of our liability, apply to all products and services sold.



# Leistungsdiagramm/Performance Graph G(SF) 10

Prüfflüssigkeit/Test Liquid: Wasser-Öl-Emulsion/Water Oil Emulsion ca. 1 - 10 cst

